

Incredible Included Features

- Covered Porch
- James Hardie Siding
- 9 Foot Ceiling on First & Second Floor
- Large Workshop Area in Garage
- Open Loft
- Mudroom Off Garage Entry
- Large Kitchen Island
- Walk-in Pantry

Selected Home Enhancements

- Sunroom
- First Floor Bedroom with Full Bath
- Double Oven
- Beverage Center
- Full Bath in Bedroom Four
- Fireplace Built-ins



Halifax



Farmhouse
Shown with Optional Black Windows



Craftsman



Coastal



Traditional

ETHERIDGE
CONSTRUCTION
homes built for your family by ours
EtheridgeConstruction.com

5859 Harbour View Blvd., Suite 300, Suffolk, VA 23435

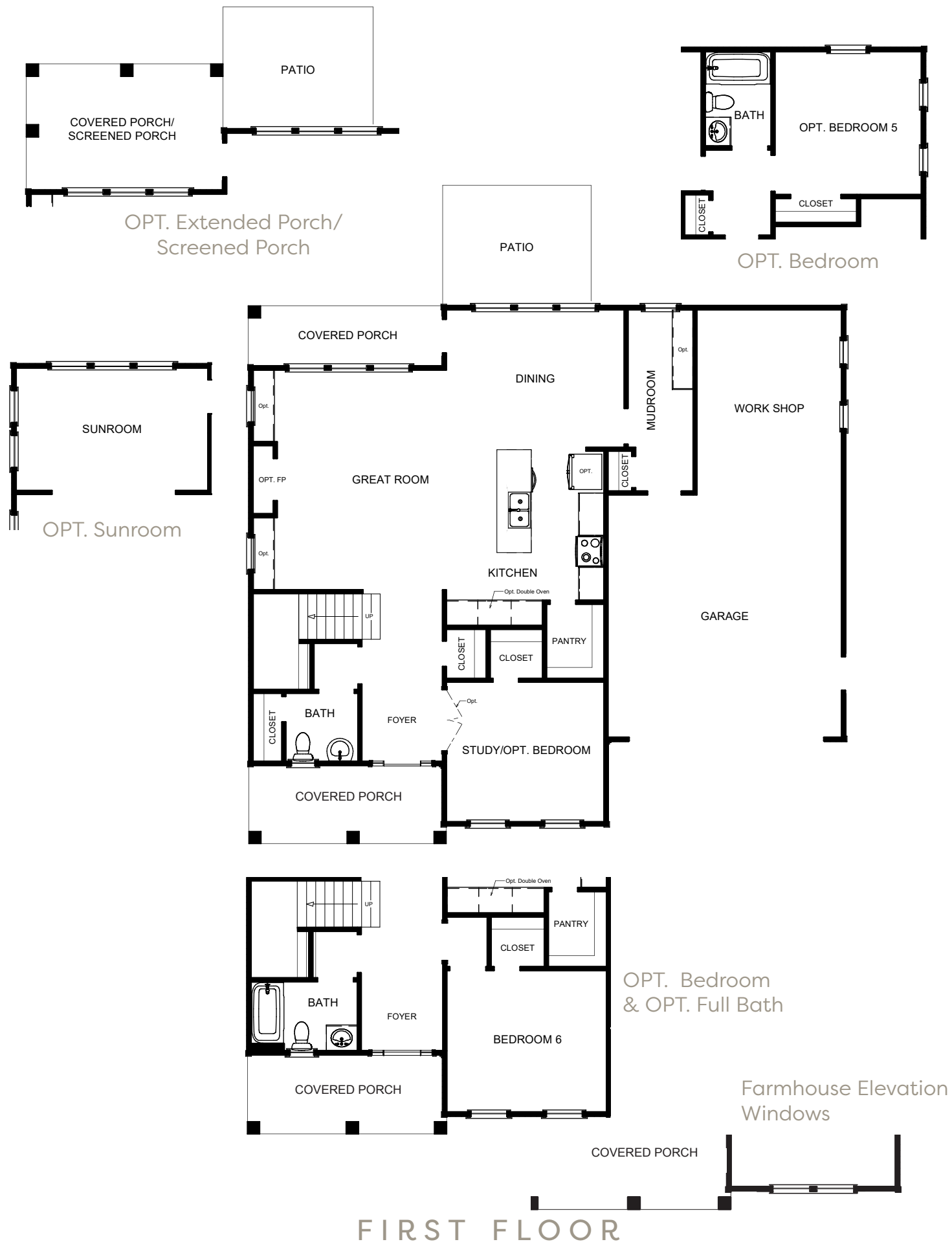
757-210-4417

Sales & Marketing by Rose & Womble Realty Co. | 757-935-9010
Bea CoBell (757) 617-3041 | Jasmine Cotto (757) 303-6746

Strawberry Landing

Suffolk, Virginia

The Halifax Plan



FIRST FLOOR



SECOND FLOOR

Builder reserves the right to change prices, plan components and specifications, to withdraw any plan, without notice. All illustrations are artist's concepts and may include non-standard features. Accuracy is not guaranteed. Extra-cost options may be shown in illustrations. Individual homes may differ from the models or from each other depending on field conditions.

