

FRANKLIN MULTI-GEN

INCREDIBLE INCLUDED FEATURES

- James Hardie Siding
- 9 Foot Ceiling on First & Second Floor
- First Floor Multi-Generational Suite
- Tray Ceiling in 2nd Floor Primary
- Large Kitchen Island
- Mudroom off Garage Entry
- Separate Soaker Tub & Shower in 2nd Floor Primary

SELECTED HOME ENHANCEMENTS

- Covered Porch
- Sunroom
- 2nd Floor Laundry
- Fireplace
- Double Oven
- Flex Room/Cased Opening



FARMHOUSE

PLANTERS STATION



TRADITIONAL



COASTAL



CRAFTSMAN

ETHERIDGE CONSTRUCTION
homes built for your family by ours
EtheridgeConstruction.com

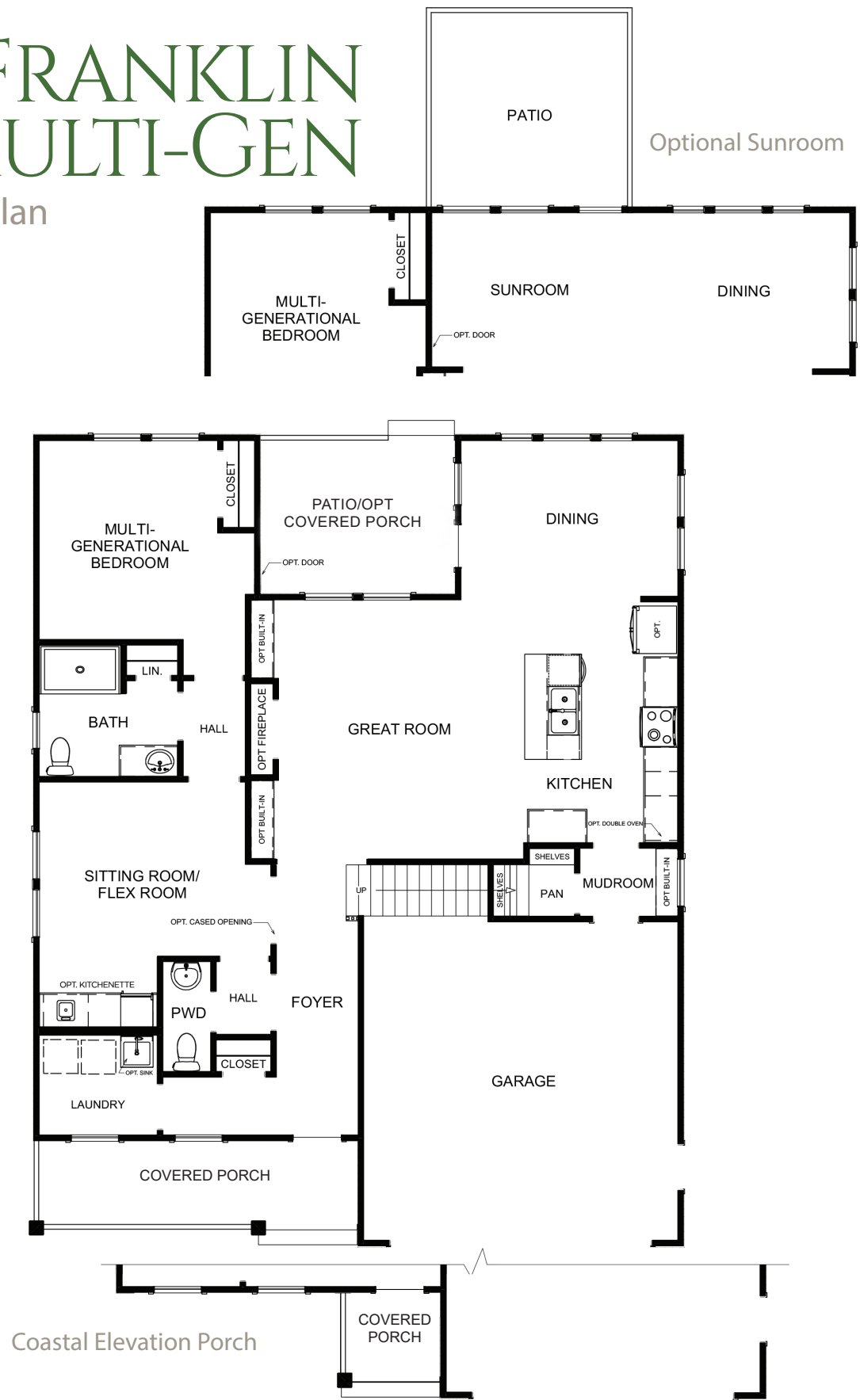
5859 Harbour View Blvd., Suite 300, Suffolk, VA 23435
 757-932-7990
 Sales & Marketing by Rose & Womble Realty Co. | (757) 935-9010

PLANTERS STATION

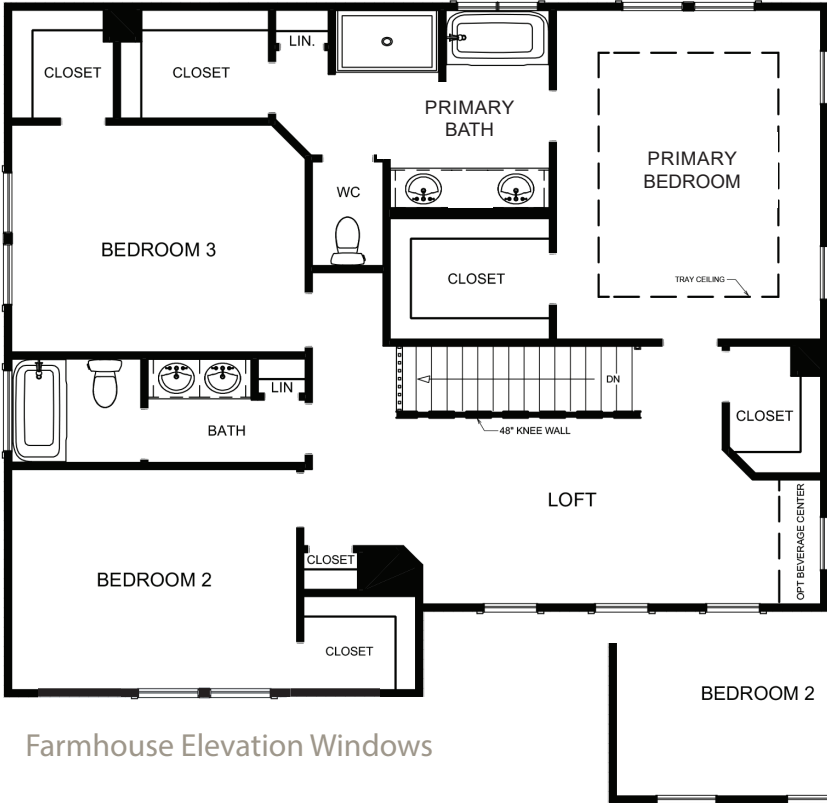
Suffolk, Virginia

The FRANKLIN MULTI-GEN

Plan

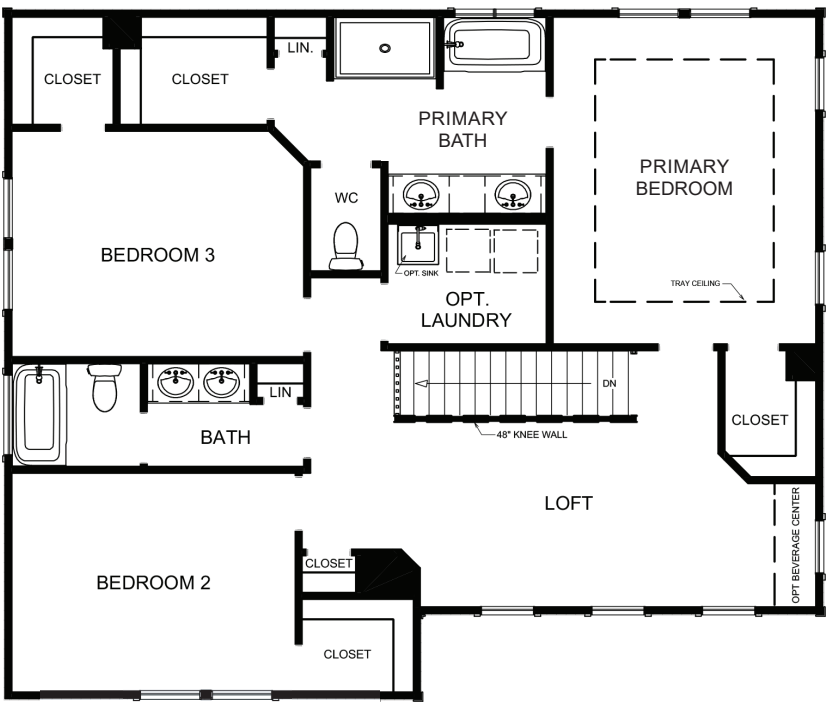


FIRST FLOOR



Farmhouse Elevation Windows

Traditional, Coastal & Craftsman Elevation Windows



Optional Second Floor Laundry

SECOND FLOOR

Builder reserves the right to change prices, plan components and specifications, to withdraw any plan, without notice. All illustrations are artist's concepts and may include non-standard features. Accuracy is not guaranteed. Extra-cost options may be shown in illustrations. Individual homes may differ from the models or from each other depending on field conditions.

