

# POINDEXTER

## INCREDIBLE INCLUDED FEATURES

- Patio
- James Hardie Siding
- 9 Foot Ceiling on First & Second Floor
- Tray Ceiling in Primary
- Kitchen Island
- Walk-in Pantry

## SELECTED HOME ENHANCEMENTS

- Sunroom
- Glass French Doors on Study
- Loft
- Beverage Center in Loft
- Covered Porch
- Electric Linear Fireplace



TRADITIONAL



COASTAL



CRAFTSMAN



FARMHOUSE



# PLANTERS STATION

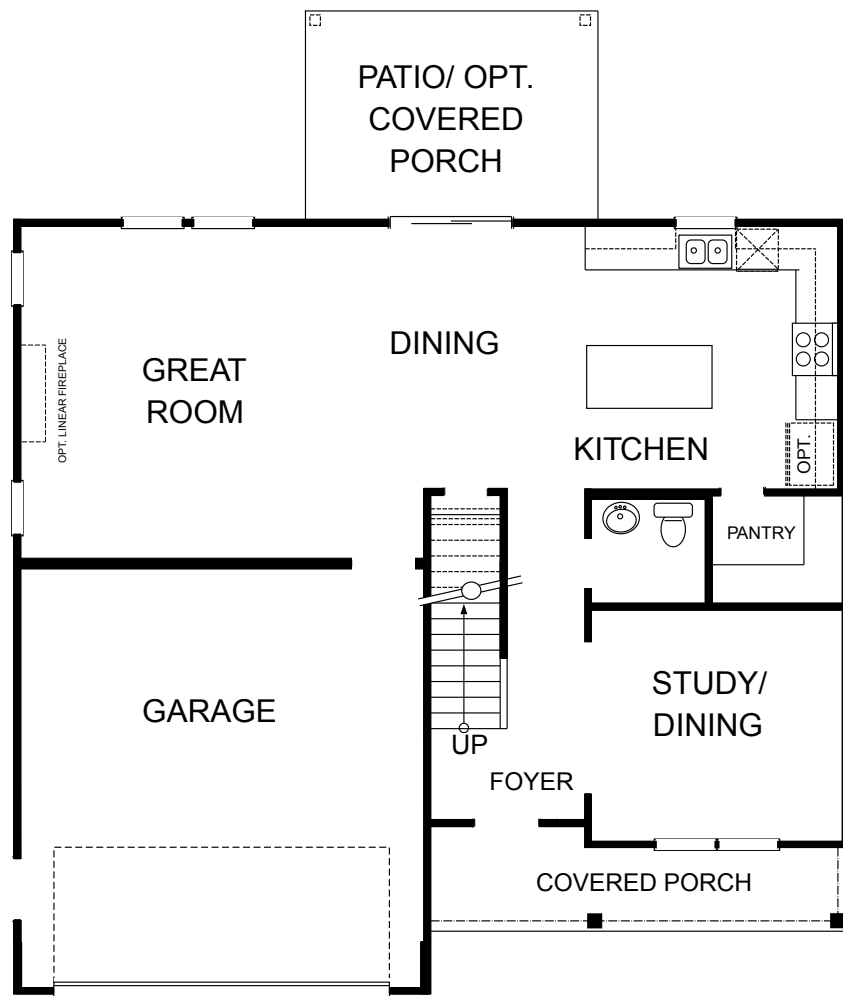
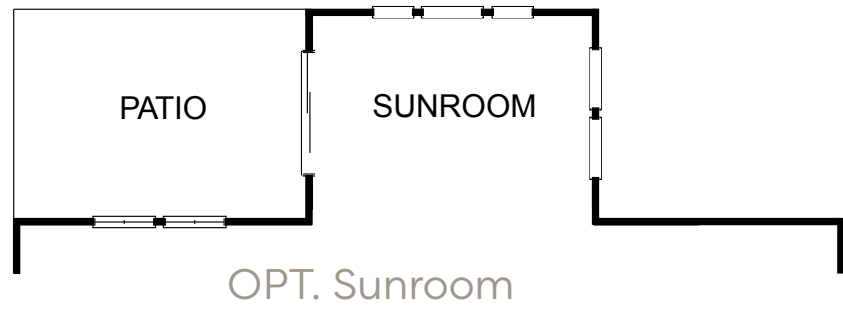
**ETHERIDGE CONSTRUCTION**  
*homes built for your family by ours*  
[EtheridgeConstruction.com](http://EtheridgeConstruction.com)

1435 Crossways Boulevard, Chesapeake, VA 23320  
**757-932-7990**  
 Marketing & Sales by Berkshire Hathaway HomeServices RW Towne Realty (757) 935-9010  
A member of the franchise system of BHH Affiliates, LLC.

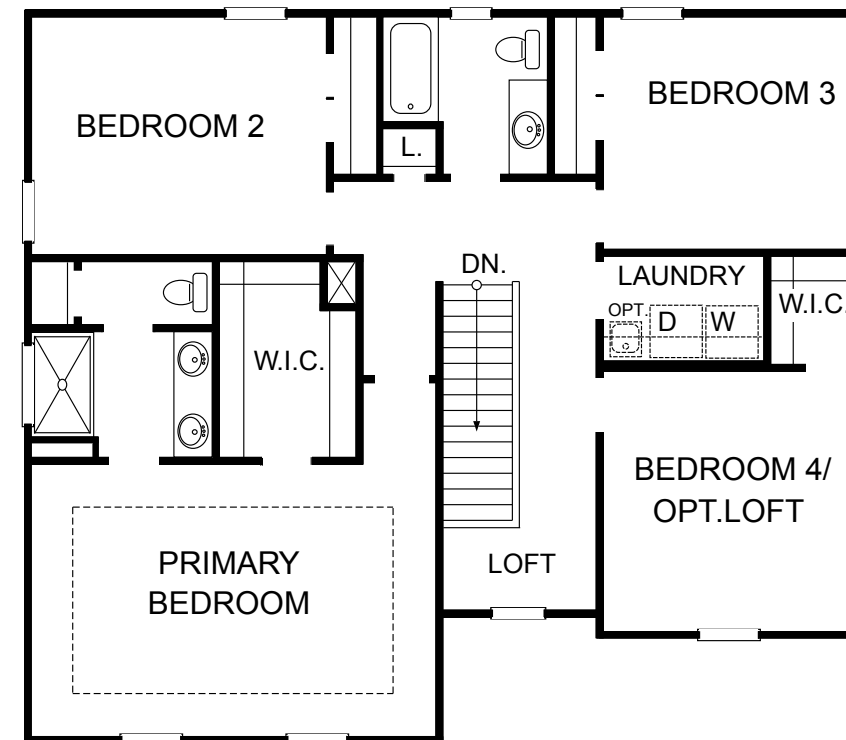
# PLANTERS STATION

Suffolk, Virginia

# The POINDEXTER Plan



FIRST FLOOR



SECOND FLOOR

